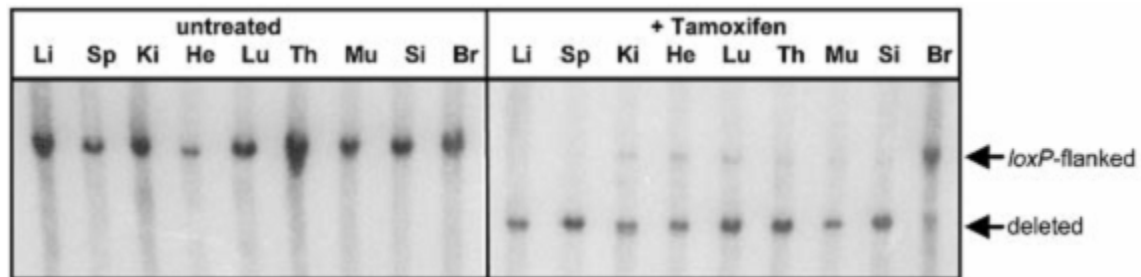


## Efficiency of Cre-mediated gene excision by CreER<sup>T2</sup> in different tissue types



$pol\beta^{lox}/rosa(CreERT2)$  mice. Cre-mediated excision of the 1.5 kb loxP-flanked region was detected by Southern analysis. Genomic DNA from various organs was digested with BamHI and hybridized with a probe specific for the polymerase  $\beta$  gene. Li, liver; Sp, spleen; Ki, kidney; He, heart; Lu, lung; Th, thymus; Mu, muscle; Si, small intestine; Br, brain (from Seibler et al., 2003).